



International Journal of Intellectual Advancements and Research in Engineering Computations

Online law system using C#.net platform

S.Roshini, M.Monisha, P. Brindha

Assistant Professor, Computer Science And Engineering, Vivekanandha College of Engineering For Women (Autonomous), Tiruchengode, Tamil Nadu, India.

ABSTRACT

- The find out about illustrates the performance of on line regulation machine developed for the humans to unaware of the crook legal guidelines below IPC(Indian penal code)
- It has provision of quotation search retrieved facility ,filtering of information , regulation search ,court search etc..
- It is additionally grievance with web2.0 equipment and empowers customers to make contributions their very own content material underneath legal guidelines in the system
- Data had been analyzed the usage of statistical bundle for social science
- The proposed machine can clear up the worldwide regulation session with low difficulty with low looking out time and operation error fee
- A range of operations such as modern-day information on line assist FAQ , question submission, on-line dialogue shape for assist and video tutorials have been created
- The aggregate of textual content mining with prison factors can also make contributions to the improvement of many modern criminal IS
- On the different hand , prison facts and regulation texts are a attainable open authorities facts class in order for innovation to be performed ,regarding the improvement of new ,better, and extra fee high-quality offerings for citizens.

INTRODUCTION

- There is a upward push in the quantity of crime in our united states of america and most of the human beings are unaware of the crook legal guidelines underneath IPC (Indian Penal Code).
- It turns into integral to make the residents conscious of all sorts of legal guidelines put forth with the aid of our charter towards crime so that human beings come ahead to register case in opposition to it. This task is achieved in particular for this purpose.
- The task on-line regulation gadget is a software program device that incorporates all the legal guidelines of IPC so that human beings can come and search for the legal guidelines for respective crime.
- The legal guidelines are labeled into unique sections in accordance to some keywords.
- There is additionally search alternative accessible the place consumer can locate or search in accordance to his requirement by means of getting into his query.
- There is additionally a facility on hand for customers to get contact of lawyers.
- An enquiry structure is furnished the place person can ask their question and can additionally register case and the structure is despatched to the court docket authority.
- This challenge consists of records of all the respective courts in vicinity for respective crimes.
- This on line machine is developed on c#.net platform and supported via a sql database to save consumer particular details.

Existing System

Problem with current scenario

Author for correspondence:

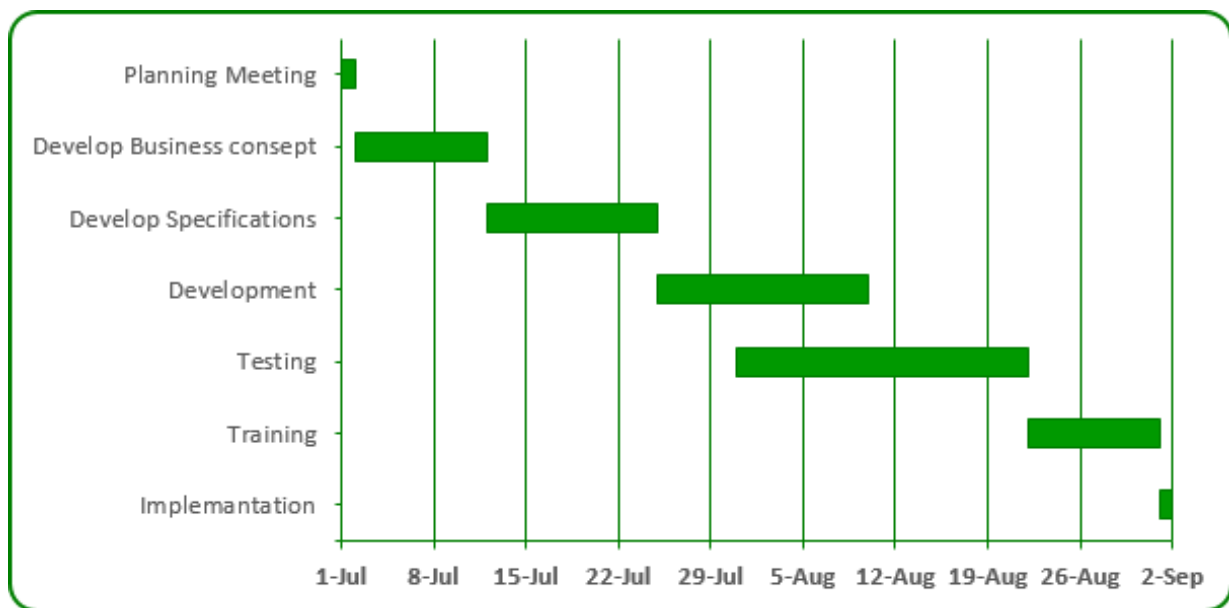
Computer Science And Engineering, Vivekanandha College of Engineering For Women (Autonomous), Tiruchengode, Tamil Nadu.

- Traditionally, there were no such system where people get awareness of criminal laws.
- In present following procedure, filing case Using FIR is not accurate.
- Collecting important information for solving a case is not easy.
- Problems in filing cases against criminals and criminal departments are not open on given information. There are chances of not accepting case or loss of case information.
- In present system handling of data is not secure there are chances of losing data.

Drawbacks of the existing system

- Maintenance of the system is very difficult.
- There is a possibility for getting inaccurate results.
- User friendliness is very less.
- It consumes more time for processing the activities.

Gantt Chart



Module & module description

This website is having 2 major modules with their sub-modules:

1. Admin Login: The authorized person need to input the login credentials to access the below given sub-modules
 - Court Entry:
 - Can add all the information about the courts available in the particular area for respective crime.
 - Lawyer Entry:
 - Can add the details about the lawyer into the system.
 - Add Criminal:

Proposed System

- Considering the anomalies in the existing system computerization of the whole activity is being suggested after initial analysis.
- To make the citizens aware of all kinds of laws put forth by our constitution against crime so that people come forward to register case against it. This project is executed especially for this purpose.
- The project online law system is a software system that contains all the laws of IPC so that people can come and search for the laws for respective crime.
- The laws are categorized into different sections according to some keywords.
- An enquiry form is provided where user can ask their query and can also register case and the form is sent to the court authority.
- This project contains information of all the respective courts in area for respective crimes.

- System allows admin to add criminal image into the system.
- 2. User Login/Registration: To proceed with login, user need to register themselves by filling up the basic registration details.
 - Court search:
 - User can search for a court according to their locality.
 - Law Search:
 - Can search law with their description using this system.
 - Lawyer Search:
 - Can search for a lawyer according to their feasibility.
 - Criminal Search
 - Users can view various most wanted criminals.
 - Updates:

- Can check for updates which is updated by the system admin

RESULT AND SCREENSHOTS

In this section, we first introduce four image datasets, which are typical saliency datasets with uneven illumination. Then we adopt three metrics to evaluate the performance of the surface saliency inspection methods. Three types of distortions, namely, JPEG, WN and GB, with four levels are applied to the left and right views of the reference stereo pairs in the database symmetrically and asymmetrically Last, we compare our proposed

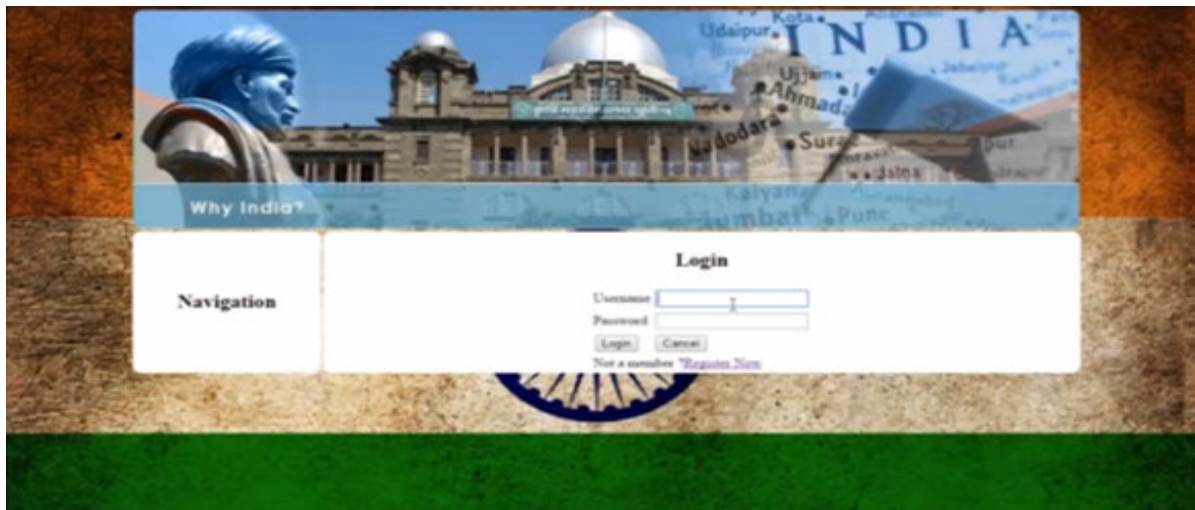
method with some state-of-the-art methods and illustrate in detail how these methods perform. In this section, we compare our approach with 5 recent models for salient region detection FT, GC, MR, GS, wCtr. As baseline, we also show the results achieved by 2 bottom-up saliency models Itti, GB. We use either the pre-computed saliency maps or codes provided by other authors to generate their saliency maps. Notice that several other recent works also present excellent results. However, they use part of the datasets for supervised training. The models based on deep neural networks rely on very large datasets for deep learning. Therefore, these methods are not compared in this paper due to fairness consideration.

The PR curves are shown in and the F-measure scores are given in Table I.

Table 1 F-Measures Of The Benchmarking Methods On Two Datasets

Data Set	FT	GC	wCtr	GS	MR	Our
SRCC	0.7097	0.8037	0.8468	0.8200	0.8406	0.8627
PASCAL-S	0.4154	0.5824	0.6379	0.6169	0.6425	0.6846

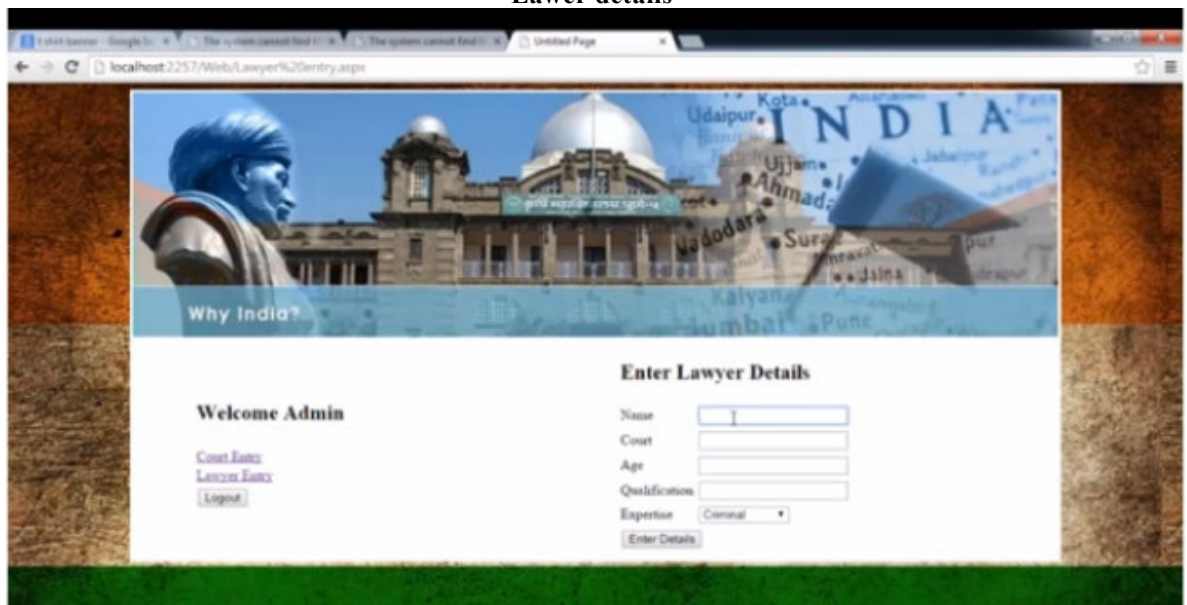
Sample Screen Shots



New court details



Lawer details



Law search



Court search



Lawyer search



CONCLUSION

This venture approves human beings to see all the LAW on Indian society, information of criminals & department. Also can add important points of criminals based totally on the permission supplied for exceptional officers like constable, sub-inspector, and circle inspector.

This challenge creates recognition in opposition to Indian society LAW's listed on the website, which helps Indian residents to be aware of about all the LAW's and file a case in opposition to a criminal..

Detection of salient regions in images is useful for object based image retrieval and browsing applications. This task can be done using methods based on the human visual attention model, where feature maps corresponding to color, intensity and orientation capture the corresponding salient regions. In this project, we propose a strategy for combining the salient regions from the individual feature maps based on a new Composite Saliency Indicator (CSI) which measures the contribution of each feature map to saliency. The method also carries out a dynamic weighting of individual feature maps. The experiment results indicate that this combination strategy reflects the salient regions in an image more accurately.

Advantages of project

- Users can register case online without visiting offices.

- User can find all lawyers information at a single place.
- The website is flexible and user-friendly.
- Saves user time, cost and efforts.

Disadvantages

- There is no human interaction.
- People can file false cases.

Applications

- This system can be implemented for government courts.
- It can be used like a lawyer portal.
- Individuals can use it for knowing different laws.

1) Load Balancing:

Since the system will be available only the admin logs in the amount of load on server will be limited to time period of admin acce

2) Easy Accessibility:

Records can be easily accessed and store and other information respectively.

3) User Friendly:

The Website will be giving a very user friendly approach for all user

4) Efficient and reliable:

Maintaining the all secured and database on the server which will be a very efficient as compared to storing all the customer data on the spreadsheet or in physically in the record books.

5) Easy maintenance:

LAW system Website is design as easy way. So maintenance is also easy.

REFERENCES

1. www.msdn.microsoft.com
2. www.msdn.microsoft.com/net/quickstart/aspplus/default.com
3. www.asp.net
4. www.fmexpense.com/quickstart/aspplus/default.com
5. www.asptoday.com
6. www.aspfree.com
7. www.4guysfromrolla.com/index.aspx