



International Journal of Intellectual Advancements and Research in Engineering Computations

Experimental investigation on partial replacement of coarse aggregate by ceramic waste in concrete

Ashraf Ali.M¹, Jagadeesh.P², Jeevanantham.S³, Ramesh.S⁴, Tharanya.S⁵

^{1,2,3,4}UG Student, B.E Civil Engineering, Nandha Engineering College, Erode, TamilNadu, India

⁵Assistant Professor, Department of Civil Engineering, Nandha Engineering College, Erode, TamilNadu, India E-Mail : civilramesh024@gmail.com

Abstract- Use of hazardous industrial wastes in concrete-making will lead to greener environment. In ceramic industry about 30% production goes as waste, which is not recycled at present. In this study an attempt has been made to find the suitability of the ceramic industrial wastes as a possible substitute for conventional crushed stone coarse aggregates. The behaviour of ceramic waste aggregate is studied in two states, fresh state and hardened state. In fresh state, workability studies are studied with slump cone test and compaction factor test and in hardened state, strength of the CWA is studied with compression test, tensile strength and flexural strength are found for ceramic waste when adding in different percentage. The obtained results are compared with M25 grade conventional concrete.

Key Words: Cement, Aggregate, Ceramic Waste, compressive strength, Split tensile strength and Flexural strength

1. INTRODUCTION

Generally in design of concrete mix, cement, fine aggregates and coarse aggregates are using from long back, which plays a crucial role in designing of a particular grade of concrete. Today's world is a concrete jungle. With the ever increasing population of the world, in general and the developing countries there is the tremendous pressure on the Civil Engineer to develop a cost effective as well as eco friendly structure to fulfil the need of the human being. In these components only cement is manufactured and both fine and coarse aggregate has been obtained naturally. This has brought up with a great destruction to the environment. And further the disposal of the huge amount of demolition waste was another problem. To solve both these problems use of waste materials such as ceramic waste. These materials have also benefits that these materials are easily available and economical. In this research these wastes are used in 20mm Coarse aggregates simultaneously. The study has been conducted on these wastes used in concrete. This used as partial

replacement of coarse aggregate. The ceramic industry has about 35% to 55% failed products due to improper mixing or heating conditions so ceramic can be used as a coarse aggregate. Present study has been done to evaluate the suitability of such waste materials in concrete production.

2. OBJECTIVES

This study was conducted to achieve the following objectives:

- i) To study the strength developments hardened concrete with waste ceramic coarse aggregate.
- ii) To determine the effect of various percentage of ceramic waste as partial coarse aggregates replacement towards compressive strength of concrete.
- iii) To determine the water absorption of ceramic aggregate concrete containing various content of ceramic tile as partial coarse aggregates replacement material.

3. MATERIAL DESCRIPTION

The materials used in the projects are cement, Fine aggregate, coarse aggregate, Ceramic waste tiles are detailed below:

A. Cement

Cement is the essential ingredient to bind all other materials to form workable concrete. The Ordinary Portland Cement of 53 grades was used in this experimentation conforming to IS: 12269:1987 is used in this experimental project.

Table No 1: Physical property on cement

PROPERTY	SPECIFICATIONS
Specific gravity	3.15
Fineness	2.6 %
Normal consistency	32
Initial setting time	30 Minutes

B. Fine aggregate

Locally available zone II river sand used as fine aggregate. The specific gravity was determined and was found as 2.53 conforming to I.S. – 383-1970.

C. Coarse aggregate

Crushed angular shape aggregate from a local source was used as coarse aggregate. The specific gravity was not recycled in any form at present. This cause impacts to environment, so it can be reused as construction materials. Ceramic waste is generated as a waste during the process of cutting, and marking. In this project study an attempt has been made to find the suitability of the ceramic industrial wastes as a possible replacement for conventional coarse aggregate. Mainly this type of recycled aggregate is used for the developments of concrete with non-conventional aggregates to improve the properties of concrete and reduce the cost. Specific gravity - 2.73.

Advantages:

- Stronger bonds
- Low thermal expansion

D. Ceramic waste

- CTA are crushed uniformly to about 20mm size manually using hammer and sieved through 20mm IS sieve. In ceramic industry about 15%-30% of daily production goes as waste.
- The coarse aggregate used in this project work are 20mm grade of size.



Fig No 1: Ceramic waste

E. Water

Portable water was used for the experimentation.

4. DESIGN MIX

As per IS 10292-2000 designed by M25 grade of concrete and water cement ratio 0.45.

Table No: 2 Mix proportion

Materials	Quantity	Mix ratio
Cement(kg/m ³)	430	1
FA(kg/m ³)	550	1.27
CA(kg/m ³)	1050	2.44
Water(lits)	197	0.45

Mixing of Concrete, Casting and Curing of test Specimens Hand mixing was done during the entire process of casting of specimens. Initially the dry

mix constituents of the mix namely cement, fine aggregate and coarse aggregate was mixed for two minutes in the mixer and then the water were added and mixing continued for another 2 minutes. The total mixing time was kept at 4 minutes until a homogeneous mixture was obtained. Compaction was achieved by means of Tamping rod.



Fig No 2: Mixing of concrete

5. EXPERIMENTAL RESULTS

Fresh concrete:

The fresh concrete properties slump test is conducted. The slump value of concrete was 72mm.

Hardened concrete:

The hardened concrete specimen properties are checked by compressive strength, split tensile strength and flexural strength.

Compressive strength:

For every percentage of replacement 6 cubes have been casted. Among them, 3 cubes were tested on the 7th and the other 3 cubes were tested on the 28th day. Totally 24 cubes were casted and 7th day and 28th day testing has been completed. Compressive test of concrete is carried out on specimens like cube by compression testing machine.

$$f_c = (P/A) \text{ N/mm}^2$$

Where,

P = Load at which the specimen fails in Newton(N)

A = Area over which the load is applied in mm

f_c = Compressive Stress in N/mm²

Table No 3: Compressive Strength Results

Grade of concrete	% of Ceramic waste	7days (N/mm ²)	28 days (N/mm ²)
M25	0	12.72	29.10
	35	12.65	29.83
	45	12.43	29.42
	55	11.92	28.99

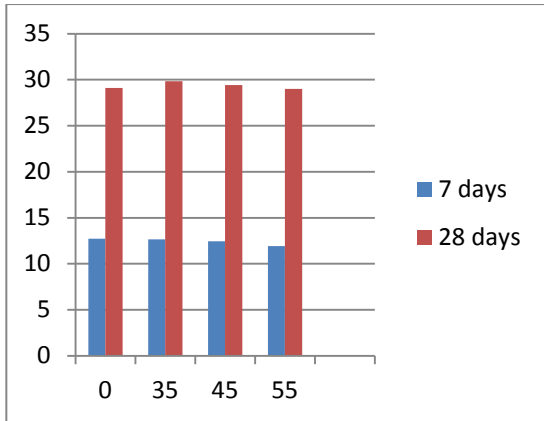


Fig No 3: Analysis of compressive strength

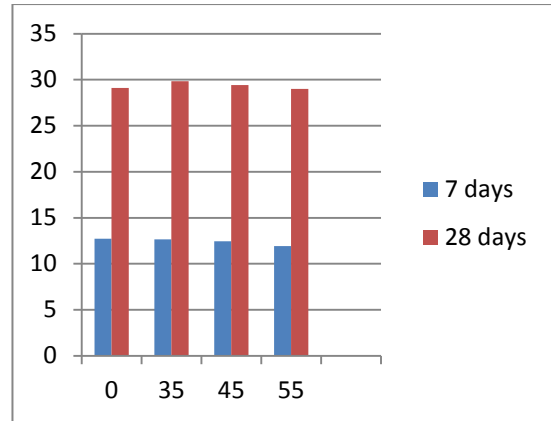


Fig No 5: Analysis of split tensile strength



Fig No 4: Testing of cube



Fig No 6: Testing of cylinder

Split tensile Strength

For every percentage of replacement 6 cylinders have been casted. Among them, 3 cylinders were tested on the 7th and the other 3 cylinders were tested on the 28th day. Totally 24 cylinders were casted and 7th day and 28th day testing has been completed. Split tensile Strength test of concrete is carried out on specimens like cylinders by compression testing machine. The Split tensile strength of the specimen was calculated by using the formula $f_t = (2P/\pi dl) \text{ N/mm}^2$

Where,

P = Maximum load in N applied to the specimen

d = Measured length in cm of the specimen

l = Measured diameter in cm of the specimen

f_t = Tensile strength N/mm^2

Table No 4: Split Tensile Test Results

Grade of concrete	% of Cerami c waste	7days (N/mm ²)	28 days (N/mm ²)
M25	0	1.90	2.25
	35	2.02	3.85
	45	1.85	3.20
	55	1.70	2.96

Flexural Strength Test

For every percentage of replacement 3 beams have been casted. The 3 beams were tested on the 28th day. Totally 24 prisms were casted and 7th day and 28th day testing has been completed. Flexural strength is the one of the measure of the tensile strength of concrete. The flexural strength of the specimen was calculated by using the formula $F_b = (Pl/bd^2) \text{ N/mm}^2$

Where,

P = Load at which specimen fails in (N)

l = Effective span in mm

b = Breadth of the specimen in mm

d = Depth of the specimen in mm

Table No 5: Flexural Strength Test Results

Grade of concrete	% of Cerami c waste	7days (N/mm ²)	28 days (N/mm ²)
M25	0	3.98	5.12
	35	3.65	5.23
	45	3.72	5.40
	55	3.15	4.94

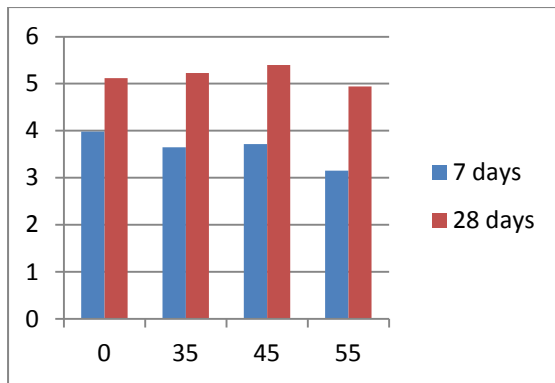


Figure no 7: Analysis of Flexural Strength



Fig No 8: Testing of prism

6. CONCLUSION

Sustainable development is a key towards improving living conditions of the future generations. Thus recycling wastes is only rational and logical step towards conservation of natural resources. The economic aspect of recycling is motivation to proceed in this direction. From the researches discussed, it is clear that ceramic wastes are suitable to be used in the construction industry, and more significantly on the making of concrete. Ceramic wastes are found to be suitable for usage as substitution for fine and coarse aggregates and partial substitution in cement production. Researchers have indicated their potential for usage in both structural and non-structural concrete and even for mortars. They were found to be performing better than normal concrete, in properties such as density, durability, permeability and compressive strength.

REFERENCES

1. Arivalagan.S, "Experimental Study on the Flexural Behavior of Reinforced Concrete Beams as Replacement of Copper Slag as Fine Aggregate". Journal of Civil Engineering and Urbanism(2013).
2. D. BRINDHA and S. NAGAN "Utilization of Copper Slag as a Partial Replacement of Fine Aggregate in Concrete". International Journal of Earth Sciences and Engineering (2010).

3. Dayalan. J, Beulah. M "Effect of Waste Materials in Partial Replacement of Cement Fine Aggregate and Course Aggregate in Concrete". International Journal of Inventive Engineering and Sciences (IJIES) (2014).
4. Dr. T.Ch.Madhavi "Copper Slag In Concrete As Replacement Material". International Journal of Civil Engineering and Technology (IJCET) (2014).
5. P.Rajalakshmi, Dr.D.Suji "Studies on Strength Characteristics on Utilization of Waste Ceramic Tiles a Aggregate in Concrete" in IJCSE, 2015.
6. Umapathy U, Mala C, Siva K "Assessment of Concrete Strength Using Partial Replacement of Coarse Aggregate for Waste Tile sand Cement for Rice Husk Ash in Concrete". International Journal of Engineering Research and Applications (2014).
7. IS 10262 : 2009, Indian Standard Concrete Mix Proportioning – Guidelines(First Revision)
8. IS 456 : 2000, Indian Standard Plain and Reinforced Concrete- Code for Practice (Fourth Revision)
9. IS 12269 : 2013, Indian Standard Ordinary Portland Cement , 53 grade specification(First Revision)
10. IS 383 -1970, Specification for coarse and fine aggregates from natural sources for concrete (Second Revision)